



Press Kit
Transport Logistic Munich
2019

Transport Logistic 4th – 7th June 2019

Press Kit

Contents

- Hankook at Transport Logistic 2019
- **e-cube Blue:** Ultra fuel-efficient e-cube Blue for long-haul traffic
- **SmartFlex:** All-rounders for all-year tyres
- Hankook Supplies Original Equipment Tyres with 41 Sizes to MAN
- Hankook truck tyres for construction site use now as Original Equipment on all Scania trucks
- Hankook and Schmitz Cargobull – a successful partnership
- **Hankook TH22:** Trailer tyres for low-bed truck transport

You will find further material on Hankook's line-up on our Media Center:
<https://www.hankooktire-mediacenter.com/transport-logistic-2019>

Hankook at Transport Logistic 2019

Tyre maker Hankook will again be exhibiting its broad and future-oriented range of tyres in the truck and bus segment at this year's Transport Logistic in Munich. The special highlight in June is a new low-profile size 355/50R22.5 for the SmartFlex AH31 steering axle profile. Also on display are the fuel-efficient e-cube Blue and further SmartFlex tyres.

Munich, Germany, 4th June 2019 – This year will be the third time that premium tyre maker Hankook takes part in the leading trade fair for logistics, mobility, IT and supply chain management in the German-speaking market. From 4th to 7th June, the company will be presenting its latest innovations in the truck and bus tyre sector at its 110 square metre stand 125/226 in hall A6.

"Transport Logistics has established itself as a firm date in the calendar for the German-speaking markets. This year we are showing our customers ground-breaking innovations in the company's commercial vehicle portfolio. Among them is the new low-profile size of the SmartFlex AH31," explains Manfred Zoni, Hankook's Truck Sales Director for the German-speaking markets.

For Hankook, economy and efficiency are the focus of its research and tyre development. The company is presenting its ultra-efficient e-cube Blue tyres with corresponding steering, drive and trailer axle profiles at Transport Logistic and offers a complete solution for all axle positions in long-distance truck traffic with the rolling resistance label A. The successful SmartFlex tyres with corresponding profiles will also be exhibited at the trade fair stand: The steering axle tyres SmartFlex AH31, drive axle tyres SmartFlex DH31 as well as Hankook's trailer tyres SmartFlex TH31 and TH22.

The tyre maker is giving away VIP hospitality tickets for the Truck Grand Prix at the Nürburgring from 9th to 21st July, to two lucky visitors to the Hankook stand at Transport Logistic.

###

Ultra fuel-efficient e-cube Blue for long-haul traffic

Hankook has expanded its ultra-efficient and fuel-saving e-cube Blue trailer tyre line by special steering and drive axle treads. The tyre maker is presenting a complete solution for long-haul traffic, which has A-label marking for rolling resistance on all axle positions. The e-cube Blue tyre family is a long-haul traffic system solution which standards out particularly on account of its ultra high fuel efficiency.

With its tyre family **e-cube Blue** the premium tyre maker Hankook is presenting a complete, particularly efficient and fuel-saving truck tyre line for long-haul duty comprising the trailer tyre e-cube Blue TL20 and the steering axle and drive axle treads (e-cube Blue AL20 and e-cube Blue DL20 respectively). Hankook has a complete solution available for long-haul truck traffic with A-label marking for rolling resistance on all axle positions. The e-cube Blue line enables fleet customers to profit from an additional eight percent tyre related fuel efficiency and provides them with up 55 percent more durability (less irregular wear among others, higher mileage etc.) compared with current products.


The tread design, which is tailored for each particular axle position is one of the factors which helps to further reduce fuel consumption and increase mileage without affecting dynamic characteristics such as braking and traction performance.

Both central rib tread blocks of the **e-cube Blue AL20** steering axle tyres support each other through their interlocking design, which increases tread block rigidity and helps to reduce rolling resistance. The stepped main tread groove design gives extra support for each tread block side. Moreover, they provide for excellent straight stability and good steering response. The largely closed tread design in the shoulder rib area ensures particularly uniform tyre wear.

The tread appearance of the **e-cube Blue DL20** drive axle tyres is characterised by a central 4-block design of the solid central rib. The offset arrangement of the individual tread blocks guarantees interlocking action on both sides and results in mutual support for very good traction performance while reducing rolling resistance at the same time. In addition, the horizontally arranged semi-deep extra sipes in combination with tie bars in the open shoulder block area further promote traction.

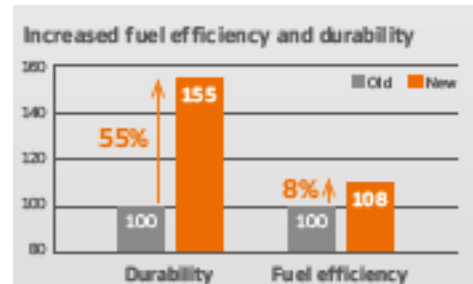
Moreover, the extra-wide contour of the **e-cube Blue TL20** trailer tyres supports a very high driving stability and optimises wear resistance. The multi-sipes added in the central rib area prevent uneven wear without affecting tread rib stability. The closed 4-groove tread design guarantees excellent lateral stability and also a very low rolling noise.

Common to all three e-cube Blue products is the newly developed tread compound with highly structured carbon black molecules for high fuel efficiency. In addition, the complete e-cube Blue tyre family also comprises all basic technologies of the successful Hankook e-cube product group, which uses amongst others Hankook's innovative mixture process IMS (Innovative Mixing System) and the patented Hankook Stiffness Control Control Theory (SCCT) design technology.

Tread	Size	LI	Marking		M+S	Availability
AL 20	385/55R22.5	160K	A/ C/W1 72dB	☑	☑	☑
DL 20	315/70R22.5	154/150L	A/ C/W1 72dB	☑	☑	☑
TL 20	385/55R22.5	160K	A/ B/W1 66dB	-	-	☑
	385/65R22.5	160K	A/ B/W1 66dB	-	-	☑
	435/50R19.5	160J	A/C/W1 70dB	-	-	☑
	445/45R19.5	160K	A/C/W1 70dB	-	-	☑

Technical properties of the Hankook e-cube Blue line

- The tyre provides up to eight percent improved tyre related fuel efficiency.
- 55 percent more durability in comparison to conventional products, e.g. through a significant reduction of uneven tyre wear
- Higher mileage thanks to optimal tread compound



e-cube Blue AL 20: Steering axle tyres

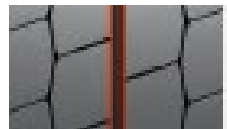
1. Reinforced tread blocks

- Interlocking central rib tread blocks for low rolling resistance



2. Shoulder block design

- The largely closed tread design in the shoulder rib area ensures particularly uniform tyre wear.



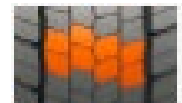
3. Sipes design

- 3D deep sipes guarantee high braking performance throughout the life of the tyre

e-cube Blue DL 20: Drive axle tyres

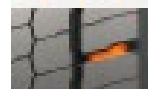
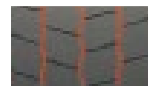
1. Block design

- Central four-block design of the solid central rib for high traction combined with reduced rolling resistance



2. Tie bars

- The largely closed tread design in the shoulder rib area ensures particularly uniform tyre wear.



3. Sipes design

- 3D deep sipes guarantee high traction and braking performance throughout the life of the tyre

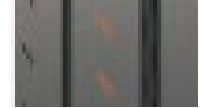
e-cube Blue TL 20: Trailer tyres

1. Tyre contour

- Extra wide tread area for very high driving stability and improved wear resistance

2. Multi-sipes

- Reduction of uneven wear without affecting tread rib stability



###

All-rounders for all-year tyres


Particularly in changeable weather conditions, Hankook recommends that truck and bus customers use the SmartFlex all-weather tyre line for medium and long-haul trips. Commercial vehicle customers can rely in particular on a high level of driving safety as well as the current trend of increased load-bearing capacity for some sizes.

Both the steering axle tyres SmartFlex AH31 and the drive axle tyres SmartFlex DH31 have M+S marking and the snowflake (3PMSF) symbol, which means good traction is guaranteed even if drivers should be surprised by wintry road conditions. The Hankook SmartFlex DH31 has a 6-rib tread with special hexagonal tread blocks that guarantees more even wear behaviour and a longer tyre service life. Hankook's patented self-cleaning sipes in the middle of each block prevent damage to the block edges and thus guarantee excellent traction throughout the tyre life.

The SmartFlex all-weather tyre line is completed by the corresponding trailer tyre SmartFlex TH31. Its wide, closed shoulder area supports stable straight driving and ensure good lateral stability. Chamfered tread grooves help prevent splintering.

Whilst the SmartFlex AH31 and SmartFlex DH31 are designated mainly for larger wheel sizes in the 22.5 inch range, SmartFlex AH35 and its drive axle counterpart SmartFlex DH35 is more designated for smaller wheels with 17.5/19.5 inch sizes.

Sizes of the SmartFlex tyre line available

Tread	Size	LI	Marking		M+S	Availability	Remark
AH31	295/80R22.5	152/148M (154M/149L)	C/B/W1 73 dB	☑	☑	☑	-
	295/80R22.5	154/149M	C/B/W1 73 dB	☑	☑	☑	Tyre with higher load-bearing capacity
	315/80R22.5	156/150L	C/B/W1 73 dB	☑	☑	☑	-
	315/70R22.5	156/150L	C/B/W1 73 dB	☑	☑	☑	-
	385/65R22.5	164K	C/B/W1 69 dB	☑	☑	☑	-
	385/65R22.5	160K	C/B/W1 69 dB	☑	☑	☑	-
	315/60R22.5	154/148L	C/B/W1 70 dB	☑	☑	☑	-
	385/55R22.5	160K	C/B/W1 69 dB	☑	☑	☑	-
	355/50R22.5	156L	C/B/W1 69 dB	☑	☑	☑	-
DH31	275/70R22.5	148/145M	C/C/W1 73dB	☑	☑	☑	-
	295/80R22.5	152/148M	D/C/W2 75 dB	☑	☑	☑	-
	315/80R22.5	156/150L	D/C/W2 75 dB	☑	☑	☑	-
	315/70R22.5	154/150L	D/C/W2 75 dB	☑	☑	☑	-
	295/60R22.5	150/147K	D/C/W2 75 dB	☑	☑	☑	-
TH31	315/60R22.5	152/148L	D/C/W2 75 dB	☑	☑	☑	-
	385/65R22.5	160K	B/B/W1 69 dB	-	☑	☑	-

	435/50R19.5	160J	B/B/W2 73 dB	-	<input checked="" type="checkbox"/>	<input checked="" type="checkbox"/>	-
	455/40R22.5	160J				In production	-

Technical properties of the Hankook SmartFlex all-year tyre line

SmartFlex AH 31

Truck all-year tyres for the steering axle for medium to long-haul applications

1. Extra-wide tread and shoulder area

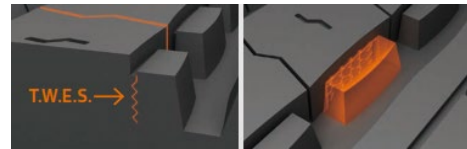
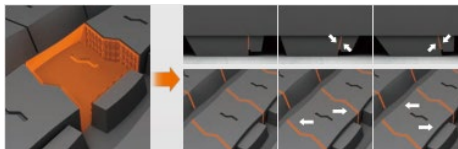
- The extra-wide open shoulder area supports a high mileage and traction as well as outstanding handling properties

2. Multi-3D sipe treads

- High traction and mileage with even wear

3. Tread Wear Equalizer Stepper Technology (T.W.E.S.)

- Stabilisers on profile blocks
- Reduction of uneven/one-sided wear



SmartFlex DH 31

Truck all-year tyres for the drive axle for medium to long-haul applications

1. A Multi-3D sipes

- High traction and mileage with even wear

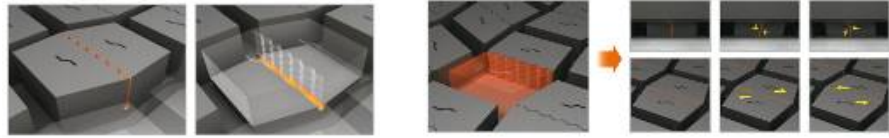
2. 6-rib block tread

- Sturdy 6-rib block tread with special hexagonal tread blocks

3. C Self-cleaning sipes

- Constant traction over the entire service life
- Protection against splintering at the corners of the sipes





SmartFlex TH 31

Truck all-year tyres for the trailer axle for medium to long-haul applications

1. 4 Zigzag sipes

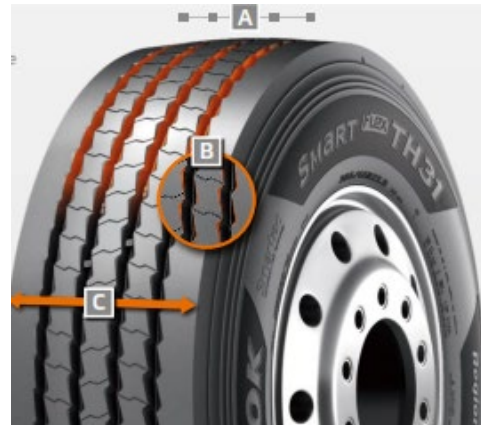
- 4 main tread grooves ensure optimum water displacement

2. Chamfered profile block design

- Chamfered profile blocks sipes help to prevent material splintering

3. Extra-wide tread and shoulder area

- The extra-wide closed shoulder area supports high driving stability and ensures good lateral stability as well as even wear



###

Hankook Supplies Original Equipment Tyres with 41 Sizes to MAN

Tyre maker Hankook is constantly expanding its Original Equipment commitment in the truck segment and already supplies original equipment tyres in 41 sizes to MAN. The MAN Truck & Bus AG belongs to the Volkswagen Group, one of Hankook's largest OE customers worldwide. The OE business with Hankook truck tyres for MAN covers a total of 41 dimensions in the 17.5, 19.5, 22.5 and 24 inch range. Hankook's Original Equipment range for the bus and truck manufacturer includes the supply of the tyre lines e-cube MAX, SmartFlex and SmartWork for various MAN models to the production facilities of the Munich-based manufacturer in Germany, Austria and Poland. The tyre ranges have been specially adapted for European conditions, boasting both ecological and economic advantages.

Premium tyre maker Hankook is listed as an OE supplier for MAN with 41 dimensions, including the truck tyre ranges e-cube MAX, SmartFlex and SmartWork. The commercial vehicles specialist and the tyre maker have been cooperating since the first quarter of 2015. Han-Jun Kim, President of Hankook Tire Europe comments: "The expansion of OE business in the commercial vehicles segment with MAN is of great strategic importance to us, as we can now offer further treads and dimensions for light to heavy-duty trucks from MAN."

The tyres will be fitted to the multi-award-winning MAN vehicle series TGX, TGS, TGM and TGL which are used for national and international long-haul, delivery and construction site traffic. Tyres used include the e-cube MAX line, which is tried-and-trusted for international long-haul traffic, the new SmartFlex all-year tyre range for flexible use between long-haul and delivery traffic, as well as construction site treads from the SmartWork series. Specially adapted for use on vehicles of the EURO 6 emission class, the treads – both as special steering and drive axle versions – score highly for environmental friendliness and mileage. This is also relevant to the TCO (Total Cost of Ownership), important for Original Equipment.

One special feature of the Hankook's Original Equipment portfolio for MAN are the numerous sizes in the low-line segment; the latest size to be added is 355/50R22.5. With these, the premium tyre maker is demonstrating that its portfolio has already integrated the current market trend, namely the growing importance of low-line sizes in the truck business.

###

Hankook's range of Original Equipment tyres for MAN:

Tread	Size	Model	LI	Marking		M+S	Availability
AL 10+	315/80R22.5	TGX	156/150L (154/150M)	B/B/W1 70dB	-	-	☑
	315/70R22.5	TGX	156/150L	B/B/W1 70dB	-	-	☑
	315/60R22.5	TGX	154/148L	B/C/W1 70dB	-	-	☑
	295/60R22.5	TGX	150/147L	C/B/W1 70dB	-	-	☑
	355/50R22.5	TGX	156L	C/B/W2 76dB	-	-	☑
DL 10+	315/80R22.5	TGX	156/150L (154/150M)	C/C/W2 73dB	☑	☑	☑
	315/70R22.5	TGX	154/150L (152/148M)	C/C/W2 73dB	☑	☑	☑
	315/60R22.5	TGX	152/148L	C/C/W2 73dB	☑	☑	☑
	295/60R22.5	TGX	150/147K	C/C/W1 73dB	☑	☑	☑
AL 10	295/80R22.5	TGX	152/148M (154/149L)	C/C/W1 70dB	☑	-	☑
	385/55R22.5	TGX	160K (158L)	B/C/W1 70dB	-	-	☑
DL 10	295/80R22.5	TGX	152/148M	C/C/W2 75dB	-	☑	☑
AH31	295/80R22.5	TGM & TGS / TGX	154/149M	C/B/W1 73dB	☑	☑	☑
	315/70R22.5	TGM & TGS / TGX	156/150L	C/B/W2 73dB	☑	☑	☑
	315/80R22.5	TGM & TGS / TGX	156/150L (154/150M)	C/B/W2 73dB	☑	☑	☑
	385/65R22.5	TGS / TGX	160K (158L)	C/B/W1 69dB	☑	☑	☑
	315/60R22.5	TGS / TGX	154/158L	C/B/W1 70dB	☑	☑	☑
	385/55R22.5	TGS / TGX	160K (158L)	C/B/W1 69dB	☑	☑	☑
DH31	295/80R22.5	TGM & TGS / TGX	152/148M	D/C/W2 75dB	☑	☑	☑
	315/80R22.5	TGM & TGS / TGX	156/150L (154/150M)	D/C/W2 75dB	☑	☑	☑
	315/70R22.5	TGM & TGS / TGX	154/150L	D/C/W2 75dB	☑	☑	☑
	315/60R22.5	TGS / TGX	152/148L	D/C/W2 75dB	☑	☑	☑
AH35	215/75R17.5	MAN TGL	128/126M	D/C/W1 65dB	☑	☑	☑
	235/75R17.5	MAN TGL	132/130M	D/C/W1 67dB	☑	☑	☑
	265/70R17.5	MAN TGL	140/138M	C/C/W1 67dB	☑	☑	☑
	265/70R19.5	MAN TGM	140/138M	C/C/W1 67dB	☑	☑	☑
	285/70R19.5	MAN TGM	146/144M	C/C/W1 67dB	☑	☑	☑

DH35	215/75R17.5	MAN TGL	126/124M	D/C/W1 66dB	☑	☑	☑
	235/75R17.5	MAN TGL	132/130M	D/C/W1 71dB	☑	☑	☑
	265/70R19.5	MAN TGM	140/138M	D/B/W1 73dB	☑	☑	☑
	265/70R19.5	MAN TGM	140/138M	D/B/W1 73dB	☑	☑	☑
	285/70R19.5	MAN TGM	146/144M	D/B/W1 73dB	☑	☑	☑
AM06 TT	325/95R24	MAN TGS	162/160K	D/C/W2 72dB	-	☑	☑
AM06	325/95R24	MAN TGS	162/160K	D/C/W2 72dB	-	☑	☑
DM06 TT	325/95R24	MAN TGS	162/160K	D/B/W1 73dB	-	☑	☑
DM06	325/95R24	MAN TGS	162/160K	D/B/W1 73dB	-	☑	☑
AM15+	385/65R22.5	MAN TGS	160K (158L)	C/C/W2 74dB	-	☑	☑
AM09	315/80R22.5	MAN TGS	156/150K	D/B/W1 67dB	-	☑	☑
	13R22.5	MAN TGS	156/150K	D/C/W1 68dB	-	☑	☑
DM09	315/80R22.5	MAN TGS	156/150K	D/C/W1 70dB	-	☑	☑
	13R22.5	MAN TGS	156/150K	D/C/W2 75dB	-	☑	☑

Hankook truck tyres for construction site use now as Original Equipment on all Scania trucks

Premium tyre maker Hankook is now supplying various treads of its SmartWork truck tyre series for use in construction site traffic, to the Swedish commercial vehicles manufacturer Scania as Original Equipment (OE). Nine dimensions for 22.5 and 24 inches are initially listed, which fleet customers and transport companies can now order from the three European Scania plants in Zwolle (Netherlands), Södertälje (Sweden) and Anger (France). The new Scania XT generation of construction vehicles is one of the models to be equipped with Hankook tyres.

Premium tyre maker Hankook is now supplying seven treads for all Scania models designed for use on construction sites, including their new XT generation of construction vehicles. These are the steering axle tyres SmartWork AM06, SmartWork AM06 TT, SmartWork AM09 and SmartWork AM15+ as well as the SmartWork DM06, SmartWork DM06 TT and SmartWork DM09 treads for the drive axle.


The commercial vehicle manufacturer is part of the Volkswagen Group and the latest truck OE partner for Hankook. Hankook's OE business with truck tyres for Scania is currently concentrating on Europe and covers a total of 34 dimensions in the 22.5 and 24 inch range. Alongside truck tyres for construction site use, Hankook is supplying the Swedish commercial vehicle manufacturer with the e-cube MAX, a truck tyre range for long-haul traffic as well as the SmartFlex, an all-year tyre for medium-haul applications. The range has been specially adapted for European conditions, boasting both ecological and economic advantages. Both tyre ranges can also be fitted to Scania buses.

The OE cooperation with Scania is Hankook's second within the Volkswagen Group in the heavy commercial vehicle segment; Hankook has been supplying various models to MAN Truck & Bus since 2015.

Han-Jun Kim, President of Hankook Tire Europe commented: "We are looking forward to expanding our cooperation with Scania. We have to rely on maximum durability when designing tyres for construction site traffic; our SmartWork line was able to completely convince the Scania engineers."

###

Hankook's range of Original Equipment tyres for Scania:

Tread	Size	LI	Marking		M+S	Availability
AM09	315/80R22.5	156/150K	D/B/W1 67dB	-	☑	☑
	13R22.5	156/150K	D/C/W1 68dB	-	☑	☑
DM09	315/80R22.5	156/150K	D/C/W1 70dB	☑	☑	☑
	13R22.5	156/150K	D/C/W2 75dB	☑	☑	☑
AM15+	385/65R22.5	158L(160K)	C/C/W2 74dB	-	☑	☑
AM 06 TT	325/95R24	162/160K	D/C/W2 72dB	-	-	☑
DM 06 TT	325/95R24	162/160K	D/C/W2 73dB	☑	☑	☑
AM06	325/95R24	162/160K	D/C/W2 72dB	-	-	☑
DM06	325/95R24	162/160K	D/C/W2 73dB	☑	☑	☑
AL10+	295/60R22.5	150/147L	C/B/W1 70dB	-	-	☑
	315/80R22.5	156/150L (154/150M)	B/B/W1 70dB	-	-	☑
	315/70R22.5	156/150L	B/B/W1 70dB	-	-	☑
	315/60R22.5	154/148L	C/B/W1 70dB	-	-	☑
	355/50R22.5	156L	C/B/W1 70dB	-	-	☑
	385/65R22.5	160K(158L)	B/B/W1 70dB	-	-	☑
DL10+	295/60R22.5	150/147L	C/C/W1 73 dB	☑	☑	☑
	315/80R22.5	156/150L (154/150M)	C/C/W1 73dB	☑	☑	☑
	315/70R22.5	154/150L (152/148M)	C/C/W1 73dB	☑	☑	☑
	315/60R22.5	152/148L	C/C/W1 73dB	☑	☑	☑
AL10	295/60R22.5	150/147K (149/146L)	C/C/W1 70dB	-	-	☑
	295/80R22.5	152/148M (154/149L)	C/C/W1 70dB	-	-	☑
	385/55R22.5	160K (158L)	B/C/W1 70dB	-	-	☑
DL10	295/80R22.5	152/148M	C/C/W1 72dB	☑	☑	☑
	295/60R22.5	150/147K (149/146L)	D/C/W1 75dB	☑	☑	☑
AH31	295/80R22.5	154/149M	C/B/W1 73dB	☑	☑	☑
	315/70R22.5	156/150L	C/B/W1 73dB	☑	☑	☑
	315/80R22.5	156/150L (154/150M)	C/B/W1 73dB	☑	☑	☑
	385/65R22.5	160K (158L)	C/B/W1 69dB	☑	☑	☑
	385/55R22.5	160K (158L)	C/B/W1 69dB	☑	☑	☑
DH31	295/80R22.5	152/148M	D/C/W2 75dB	☑	☑	☑
	315/70R22.5	154/150L	D/C/W2 75dB	☑	☑	☑

	315/80R22.5	156/150L (154/150M)	D/C/W2 75dB	☑	☑	☑
AL 22	295/80R22.5	154/149M	C/B/W1 69db	-	☑	☑
	315/80R22.5	156/150L	C/B/W1 69dB	-	☑	☑

Hankook and Schmitz Cargobull – a successful partnership

Hankook and the trailer manufacturer Cargobull have been working together successfully since 2013. The Europe-wide cooperation covers original fitment of eleven different trailer models, strategic cooperation in the fleet business and the full-service business. In 2016 the two partners extended their cooperation by three years. Schmitz Cargobull honoured Hankook with the title “Strategic Partner” in 2017 for the successful collaboration.

Premium tyre maker Hankook and Schmitz Cargobull AG, Europe’s leading manufacturer of truck trailers, have been cooperating closely and successfully for five years. Schmitz Cargobull specialises in the production of semitrailers for heavy-duty trucks and sets benchmarks for particularly efficient transport solutions on account of its innovative manufacturing and intelligent production technologies. Premium tyre maker Hankook has been supplying Schmitz Cargobull AG with its complete range of trailer tyres for original fitment for several years now. These state-of-the-art tyres have been adapted for European conditions and are eco-friendly. The range covers the truck trailer tyres of the Hankook e-cube MAX and SmartWork series among others.

The original fitment business for national and international heavy-duty traffic with Hankook TBR trailer tyres for Schmitz Cargobull is initially concentrating on the European market and currently covers 13 trailer sizes in the 19.5 and 22.5 inch range, including the mega-trailer size 445/45R19.5, 435/50R19.5 and 455/40R22.5 of the Hankook e-cube family. All Hankook tyres are delivered directly to the production plants of the trailer manufacturer, which is based in Altenberge in North Rhine-Westphalia.

The long-standing cooperation is concentrating on strategic collaboration in the fleet business on a European level and extending the existing supply contracts in the OE segment. In 2016, and ahead of time, the two partners agreed to extend their cooperation until 2019 and intensify their business relationship. This more intensive collaboration covers the expansion of the full-service range as well as the development of the spare parts business of Hankook trailer tyres through the existing sales cooperation between the Schmitz Cargobull Service Partner network and joint service partner Pneunet.


Manfred Zoni, Truck Sales Director for the German-speaking market, sees lots of potential in an even closer cooperation with Schmitz Cargobull: “Stepping up our partnership with Schmitz Cargobull is of strategic importance to us, particularly since it boosts both our original fitment and spare parts business in the trailer segment.”

Schmitz Cargobull also values the close and reliable collaboration with the premium tyre maker. As a mark of recognition, the company awarded the **“Strategic Partnership”** prize to Hankook in 2017.

Bernhard Schmitz, Deputy General Manager of Strategic Purchasing at Cargobull is looking forward to a positive partnership. “Hankook’s strategy supports the Schmitz Cargobull policy. We are convinced that the long term collaboration with Hankook will complement our premium products and therefore we can deliver optimum transport solutions to our customers.”

###

Hankook's range of original fitment tyres for Schmitz Cargobull

Tread	Size	LI	Marking		M+S	Availability
TH31	385/65 R22.5	160K	B/B/W1 69dB	-	☑	☑
	435/50 R19.5	160J	B/B/W2 73dB	-	☑	☑
TH22	385/55 R22.5	160K	B/B/W2 71dB	-	☑	☑
	385/65 R22.5	164K	C/B/W1 70dB	-	☑	☑
TM15	385/65 R22.5	160K	D/C/W1 69dB	-	☑	☑
TL10	445/45 R19.5	160J	B/B/W2 73dB	-	☑	☑
TL10+	385/65 R22.5	160K	B/B/W1 69dB	-	-	☑
	385/55 R22.5	160K	B/B/W1 70dB	-	-	☑
	435/50 R19.5	160J	B/B/W2 73dB	-	-	☑
	455/40 R22.5	160J	B/B/W2 71dB	-	-	☑
TL20	385/55 R22.5	160K	A/B/W1 66dB	-	-	☑
TW01	385/65 R22.5	160K	B/C/W1 69dB	☑	☑	☑
AW02	385/55 R22.5	160K	C/C/W1 70dB	☑	☑	☑

Hankook TH22: Trailer tyres for low-bed truck transport


The TH22 is Hankook's trailer specialist when it comes to transporting heavy loads in regional traffic, along country roads for example. Because alongside the standard sizes, the TH22 is available in smaller sizes which can then be fitted to low-bed trucks, making maximum loading volume possible.

The Hankook TH22 is the successful trailer tyre from the premium tyre maker for regional and delivery traffic. The TH22 is available in standard sizes 425/65R22.5 and 385/55R22.5 and also in smaller sizes especially for use on low-bed trailers.

The profile and carcass design of the Hankook TH22 trailer tyre optimises wear resistance as well as rolling resistance. The smaller sizes have a closed 4-rib block profile with extra-broad, solid shoulder ribs which was especially developed for low rolling resistance and good lateral stability. At the same time, the tread design supports even wear and 10 percent higher mileage than its predecessor. Wave-shaped tread sipes and transverse sipes right down to the base of the groove additionally provide for effective water displacement, making the TH22 a true all-round talent when it comes to handling. The large sizes have the same characteristics, the only difference being that the block profile is made up of five ribs.

The low design height ensures maximum loading volume and, coupled with the high load-bearing capacity, makes the Hankook TH22 in the sizes 205/65R17.5 and 215/75R17.5 particularly suitable for low-bed trailer heavy-duty transport on country roads, such as car, construction vehicle or construction element transport.

Available sizes of the TH22

Tread	Size	LI	Marking		M+S	Availability
TH22	9.5R17.5	143/141J	D/B/W1 70dB	-	☑	☑
	11R22.5	148/146L	C/B/W1 70dB	-	☑	☑
	215/75R17.5	135/133J	D/B/W1 70dB	-	☑	☑
	235/75R17.5	143/141J	C/B/W1 70dB	-	☑	☑
	245/70R17.5	143/141J (146/146F)	C/B/W1 70dB	-	☑	☑
	245/70R19.5	141/140J	C/B/W1 67dB	-	☑	☑
	265/70R19.5	143/141J	C/B/W1 70dB	-	☑	☑
	285/70R19.5	150/148J	C/B/W1 70dB	-	☑	☑
	205/65R17.5	129/127J	C/B/W1 70dB	-	☑	☑
	425/65R22.5	165K	B/B/W1 71dB	-	☑	☑
	385/55R22.5	160K (158L)	B/B/W1 71dB	-	☑	☑

Technical properties of the Hankook TH22

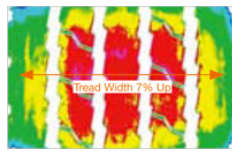
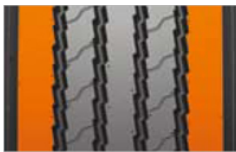
1. Tyre design

- Belt structure: Less belt deformation guarantees very low rolling resistance
- Carcass structure: The wider carcass profile with reinforced belt cord guarantees excellent durability
- Bead structure: Reinforced bead structure ensures a long service life even at high load weights



2. Tread design

- Optimised zigzag rib design for good self-cleaning
- Wide and firm shoulder package for improved mileage and even wear
- Solid, continuous centre rib improves rolling characteristics and lateral stability



###

About Hankook Tire

Hankook Tire manufactures globally innovative, award winning radial tyres of proven superior quality for passenger cars, light trucks, SUVs, RVs, trucks, and buses as well as motorsports (circuit racing/rallies).

Aspiring to bring consumers the utmost excellence in product quality, technological excellence and driving satisfaction, Hankook Tire continuously invests in research and development maintaining five R&D centres and eight production facilities around the world. Bespoke tyre solutions for the European markets as well as European Original Equipment according to the requirements of leading premium car manufacturers, are developed in the company's regional Technical Center in Hanover/Germany. Production for the European region is taking place in the state-of-the-art manufacturing site in Rácalmás/Hungary which was inaugurated in June 2007 and is continuously being expanded. Currently around 3,000 employees produce up to 19 million tyres a year for passenger cars, SUVs and light trucks.

Hankook Tire's European headquarters are located in Neu-Isenburg near Frankfurt am Main in Germany. The manufacturer operates further branches in Czech Republic, France, Germany, Hungary, Italy, the Netherlands, Poland, Russia, Spain, Sweden, Turkey, UK and Ukraine. Hankook products are sold directly through regional distributors in other local markets. Hankook Tire employs approximately 21,000 people worldwide and are selling their products in over 180 countries. Internationally leading car manufacturers rely on tyres made by Hankook for their original equipment. Approximately 30 percent of the company's global sales are generated within the European and CIS-Region. Hankook Tire has been represented in the renowned Dow Jones Sustainability Index World (DJSI World) since 2016.

For more information please visit www.hankooktire-mediacenter.com or www.hankooktire.com

Media-Contact:

Hankook Tire Europe GmbH | Corporate Communications Europe/CIS
Siemensstr. 14, 63263 Neu-Isenburg | Germany

Felix Kinzer, Director
Tel.: +49 (0) 61 02 8149 – 170
f.kinzer@hankookreifen.de

Anna Pasternak, PR Manager
Tel.: +49 (0) 6102 8149 – 173
a.pasternak@hankookreifen.de

Yara Willems, Public Relations
Tel.: +49 (0) 6102 8149 – 172
y.willems@hankookreifen.de

Stefan Prohaska, Public Relations
Tel.: +49 (0) 6102 8149 – 171
s.prohaska@hankookreifen.de

Kristina Schott, Public Relations
Tel.: +49 (0) 6102 8149 – 175
k.schott@hankookreifen.de