

## WHAT IS THE FUTURE OF MICRO MOBILITY?

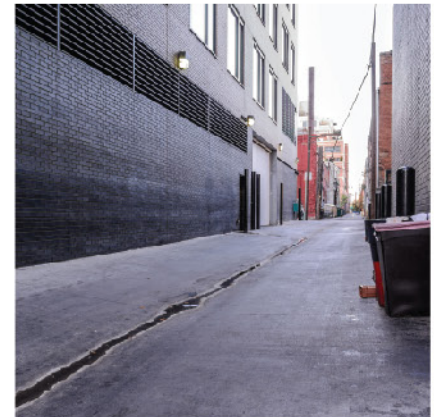
Perhaps it will be sleek and two-wheeled with incredible cornering potential. The i-Play envisions a future where its individualized micro mobility is a dynamic and efficient way to get around in the megacity.



CURVE

MICRO

SHARING



## URBAN MICRO MOBILITY

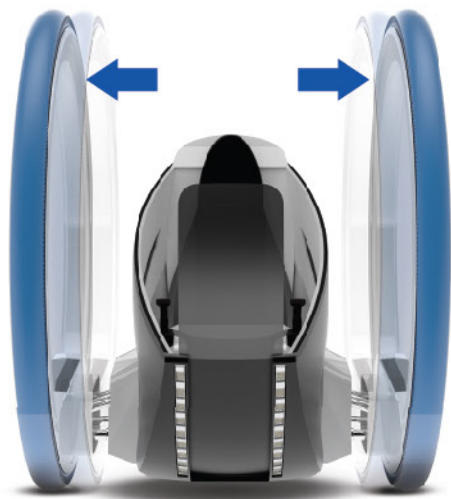
To solve the traffic congestion problem of megacity, we need a car that is active in car sharing and able to move freely and stably on narrow roads.





## DRIVING MODE

It is a single user mobility that can realize an optimum performance even at high speed and cornering by changes of the wheel.



Active mode // Wide



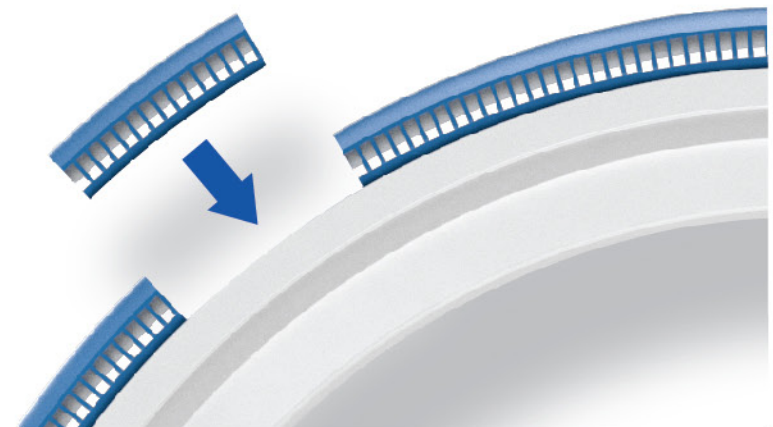
Standby mode // Narrow

Narrow shape makes it possible to smoothly park in narrow roads and alleyways.



Sharing mode

It is used as means of a public transportation and parked in a narrow Standby Mode when not in use.



Module units

In case of tire damage, the affected tire segment can be individually replaced.

## EFFICIENCY MODE

It maximizes the efficiency in urban car sharing system.





## URBAN MICRO MOBILITY, I-PLAY

Two wheeled mobility maximizes the efficiency and cornering in the urban car sharing system.